

THE PENINSULA

L O N D O N



Artist's impression of the Peninsula London

Project Newsletter Issue 013 | October 2019

Welcome

The 1-5 Grosvenor Place project is advancing well. You will notice the visual progress in the Façade now that works are underway to the Grosvenor Place Elevation.

We are delighted to have recently achieved a Considerate Constructors score of **Excellent** based on the following:

- Appearance
- Community
- Environment
- Safety
- Workforce

For more information on the Considerate Constructors Scheme, visit www.ccscheme.org.uk.

Construction Liaison Group

The most recent Construction Liaison Group (CLG) meeting was held on 18th September and was well attended by local resident and business groups. The Project team facilitated a site walk and progress update for the attendees which was well received.

The next CLG meeting is scheduled for December 2019. For more information please contact Soundings via the project email on page two of the newsletter.



THE HONGKONG AND SHANGHAI HOTELS, LIMITED
香港上海大酒店有限公司

 PrimeDevelopment

Key Dates

October 2019

Façade Installation
Upper Levels

Roof Works Commence

Internal Fit Out

December 2019

Basement Excavation
Complete

Next CLG

**This Site is
Registered with the
Considerate
Constructors
Scheme!**

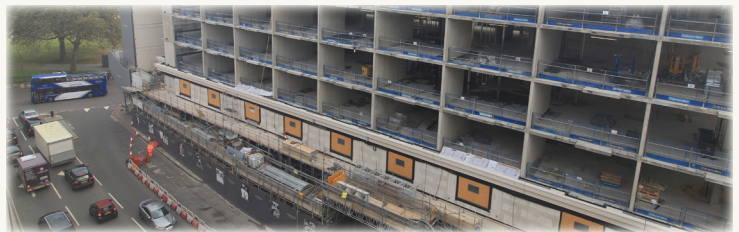


Construction Update

Milestone achieved! Superstructure completed 3rd September. All tower cranes will remain in place at the top of the lift cores for the rest of the year. Façade works are well under way, with panelised envelope panels beginning to be installed on Halkin Street and panel installation works having commenced on Grosvenor Crescent. Mechanical and electrical service installation and hotel guestroom fit out is underway within the Hotel. The vehicle access – egress route through the site remains in use; vehicles use Halkin Street for access and Grosvenor Crescent for egress. Excavation works are well underway and will continue throughout this year.

Upcoming Activities

- Roofing works start, along with blockwork at basement level and between the residential and hotel areas.
- Possible external works in Belgravia by UKPN to bring additional power to the new development. This will be carried out over the coming months in small sections, programmed to complete by February 2020.
- Sewer connections will start underground in Halkin Street and Grosvenor Crescent. This will not affect either roads or footpaths, although no confirmed dates as yet.
- The motorcycle bay on Grosvenor Crescent by the Santander bike stand will be closed once the adjacent site access is re-opened, this is planned for October 2019. The bike stand will remain open for the duration of our works.



Site Progress, September 2019

Site Hours: Monday-Friday 08:00-18:00 | Saturday 08:00-13:00 | Sunday Closed

Contact: info@peninsulalondonproject.co.uk | Freephone: 0800 304 7356 - Select Option 1 for general enquiries; Option 2 for an immediate site issue or emergency | www.peninsulalondonproject.co.uk

